

INSTRUMENT WAS FILED FOR
RECORD BY BLAINE COUNTY TITLE,
AS AN ACCOMMODATION ONLY, IT
HAS NOT BEEN EXAMINED AS TO ITS
EXECUTION OR AS TO ITS EFFECT
ON THE TITLE

RECORDING REQUESTED AND
WHEN RECORDED RETURN TO:

Instrument # 558902

HAILEY, BLAINE, IDAHO

6-13-2008 11:45:00 No. of Pages: 5

Recorded for : BLAINE COUNTY TITLE

JOLYNN DRAGE Fee: 15.00

Ex-Officio Recorder Deputy

index to: MISCELLANEOUS DOCUMENTS

ymfp

(Space Above This Line For Recorder's Use)

NOTICE OF WITHDRAWAL OF REAL PROPERTY

Pursuant to Section 15.2(b) of the Amended And Restated Declaration of
Covenants, Conditions For The Thunder Spring Development ("Declaration"), dated October 29,
2007 and recorded on December 24, 2007 as Instrument No. 554269, in the records of Blaine
County, Idaho, the undersigned as Declarant (as defined in the Declaration) hereby withdraws
the real property described in Exhibit A attached hereto, from the Condominium Project (as
defined in the Declaration).

DATED this 11th day of June, 2008.

Thunder Spring LLC, a Delaware limited liability
company

By:

Charles Schoenher

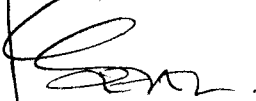
Name: Charles Schoenher

Title: Member

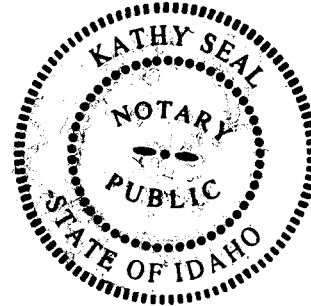
STATE OF IDAHO)
) ss.
COUNTY OF BLAINE)

On this 11th day of June, 2008, before me, the undersigned, a Notary Public, in and for said State, personally appeared **Charles Schoenherr**, known to me, and/or identified to me on the basis of satisfactory evidence, to be the Vice President of LB Thunder Spring, Inc., as Managing Member of Thunder Spring Holdings, LLC, Sole Member of Thunder Spring, LLC, the Limited Liability Company that executed the instrument and the foregoing instrument was signed on behalf of said company by authority of consent of its members and acknowledged to me that he/she/they executed the same.

WITNESS MY HAND AND OFFICIAL SEAL.



Notary Public:
My commission expires: 7-26-2011
Resides: Ketchum



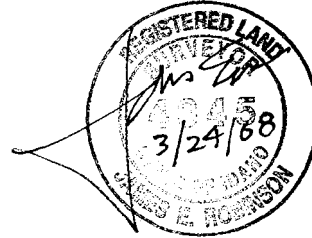
Benchmark Associates, P.A.

ENGINEERING, PLANNING, SURVEYING & MAPPING

P.O. Box 733 • 100 Bell Drive

Ketchum, Idaho 83340

208/726-9512 • Fax 208/726-9514 • www.bma5b.com



LEGAL DESCRIPTION

A PORTION OF LAND
Within: THUNDER SPRINGS LARGE BLOCK PLAT
KETCHUM, IDAHO

TOWNSHIP 4 NORTH, RANGE 18 EAST, BOISE MERIDIAN
SECTION 7, KETCHUM, BLAINE COUNTY, IDAHO

A portion of land lying within Parcel "A" Common Area, including Future Block F1 and Future Block F2 of THUNDER SPRINGS LARGE BLOCK PLAT, according to the official plat thereof, recorded as Instrument No. 437167, records of Blaine County, Idaho, said parcel being more particularly described by metes and bounds as follows:

Commencing At the S.E. corner of said Section 7; Thence N 89°32'40" W A Distance Of 5353.50 Feet to a Brass Cap Marking the S.W corner of said Section 7;
Thence N 11°05'07" E A Distance Of 1921.30 Feet to a Brass cap marking the southwest corner of Lot 21 within Block 4 of Saddle View Subdivision No.3, according to the official plat thereof, recorded as Instrument No. 164293, records of Blaine County, Idaho, said southwest corner also being the southeast corner (and TPOB) of said Thunder Springs Large Block Plat, said corner being the True Point of Beginning of the following described parcel of land.

Thence along the boundary common to said Lot 21 and Thunder Springs Large Block Plat by the following courses: N 00°03'22" E A Distance Of 184.82 Feet to a Brass Cap;
Thence N 66°38'27" E A Distance Of 126.24 Feet to a Brass Cap;
Thence N 30°10'12" E A Distance Of 42.79 Feet to a Found 1/2" rebar marking the North East corner of said Lot 21;
Thence continuing N 30°10'12" E A Distance Of 2.26 Feet;
Thence N 47°47'08" W A Distance Of 9.43 Feet;
Thence With A Curve Turning To The Right With An Arc Length Of 24.97 Feet With A Radius Of 30.00 Feet With A Chord Bearing Of N 23°56'20" W, With A Chord Length Of 24.26 Feet With A Delta Angle Of 47°41'35";,
Thence N 00°05'33" W A Distance Of 96.53 Feet;

Page 1 of 2

G:\BMA\T\thunder springs\plat - large block\07194 conveyance legal description rev

Benchmark Associates, P.A.

ENGINEERING, PLANNING, SURVEYING & MAPPING
P.O. Box 733 • 100 Bell Drive
Ketchum, Idaho 83340
208/726-9512 • Fax 208/726-9514 • www.bma5b.com

A PORTION OF LAND Within: THUNDER SPRINGS LARGE BLOCK PLAT

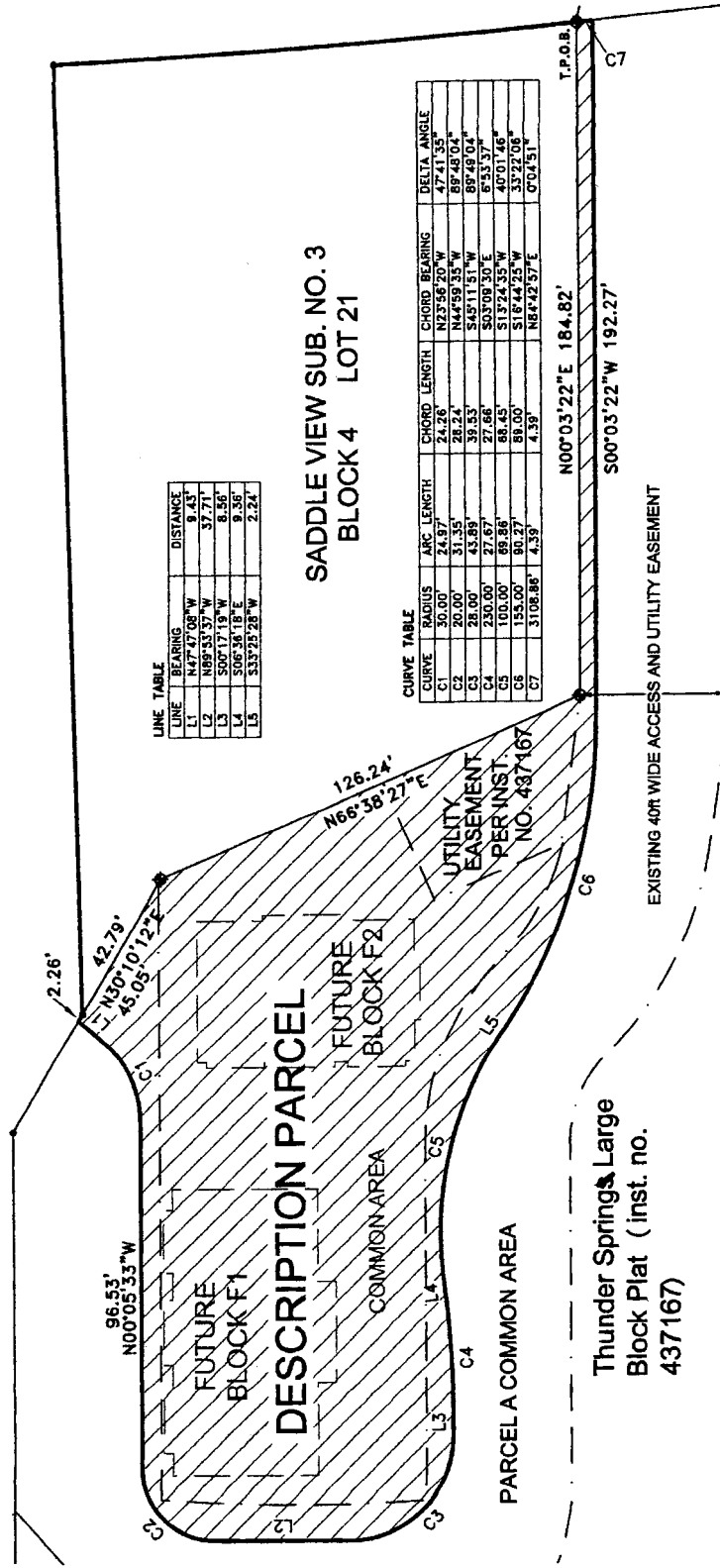
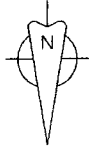
continued

Thence With A Curve Turning To The Left With An Arc Length Of 31.35 Feet With A Radius Of 20.00 Feet With A Chord Bearing Of N 44°59'35" W, With A Chord Length Of 28.24 Feet With A Delta Angle Of 89°48'04";;
Thence N 89°53'37" W A Distance Of 37.71 Feet;
Thence With A Curve Turning To The Left With An Arc Length Of 43.89 Feet With A Radius Of 28.00 Feet With A Chord Bearing Of S 45°11'51" W, With A Chord Length Of 39.53 Feet With A Delta Angle Of 89°49'04";;
Thence S 00°17'19" W A Distance Of 8.56 Feet;
Thence With A Curve Turning To The Left With An Arc Length Of 27.67 Feet With A Radius Of 230.00 Feet With A Chord Bearing Of S 03°09'30" E, With A Chord Length Of 27.66 Feet With A Delta Angle Of 6°53'37";;
Thence S 06°36'18" E A Distance Of 9.36 Feet;
Thence With A Curve Turning To The Right With An Arc Length Of 69.86 Feet With A Radius Of 100.00 Feet With A Chord Bearing Of S 13°24'35" W, With A Chord Length Of 68.45 Feet With A Delta Angle Of 40°01'46";;
Thence S 33°25'28" W A Distance Of 2.24 Feet;
Thence With A Curve Turning To The Left With An Arc Length Of 90.27 Feet With A Radius Of 155.00 Feet With A Chord Bearing Of S 16°44'25" W, With A Chord Length Of 89.00 Feet With A Delta Angle Of 33°22'06";;
Thence S 00°03'22" W A Distance Of 192.27 Feet to a point on the northerly boundary of Saddle Road;
Thence along said northerly boundary With A Curve Turning To The Right With An Arc Length Of 4.39 Feet With A Radius Of 3108.86 Feet With A Chord Bearing Of N84°42'57" E, With A Chord Length Of 4.39 Feet With A Delta Angle Of 0°04'51" to The True Point of Beginning.

Page 2 of 2

G:\BMA\T\thunder springs\plat - large block\07194 conveyance legal description rev

EXHIBIT A



LINE TABLE

LINE	BEARING	ARC LENGTH	CHORD LENGTH	CHORD BEARING	DELTA ANGLE
L1	N47°47'08"W	24.97'	24.26'	N22°56'20"W	47°41'35"
L2	N69°35'37"W	31.35'	28.24'	N44°59'35"W	89°49'04"
L3	S00°14'18"E	28.00'	27.66'	S45°11'51"W	89°49'04"
L4	S33°25'28"W	230.00'	217.66'	S03°09'30"E	6°53'37"
L5	S33°25'28"W	100.00'	68.45'	S13°24'35"W	40°01'46"
		155.00'	88.00'	S18°44'25"W	33°22'08"
		3108.86'	4.39'	N84°42'57"E	0°04'51"

CURVE TABLE

CURVE	RADIUS	ARC LENGTH	CHORD LENGTH	CHORD BEARING	DELTA ANGLE
C1	30.00'	24.97'	24.26'	N22°56'20"W	47°41'35"
C2	20.00'	31.35'	28.24'	N44°59'35"W	89°49'04"
C3	28.00'	43.89'	39.53'	S45°11'51"W	89°49'04"
C4	230.00'	217.67'	217.66'	S03°09'30"E	6°53'37"
C5	100.00'	68.45'	68.45'	S13°24'35"W	40°01'46"
C6	155.00'	88.00'	88.00'	S18°44'25"W	33°22'08"
C7	3108.86'	4.39'	4.39'	N84°42'57"E	0°04'51"

07194 - CONVEYANCE MAP

EXHIBIT A

Thunder Springs Large
Block Plat (inst. no.
437167)